



- DCF 77 radio receiver for programmable time switches 179 410–179 440, 179 610–179 641
- One receiver can connect to 10 time switches
- DCF 77 radio link with FU 20.00 pro
- Time and date are automatically transferred to the clock
- Fully automatic summertime (European standard)
- Operation indicator: flashing LED on receiving
- Compact housing
- Simple mounting with fastening angle, receiver is rotatable
- Connection wire specifications: 2-wire, no shield, variable core cross-section
- Max. length of wire between receiver and time switch 200 m

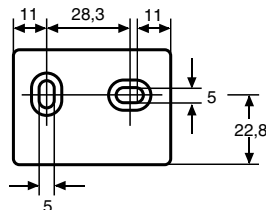
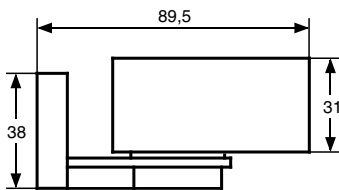
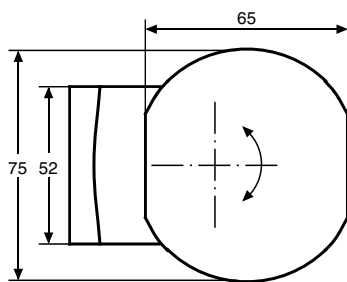


Range of the signal approx. 1500 km

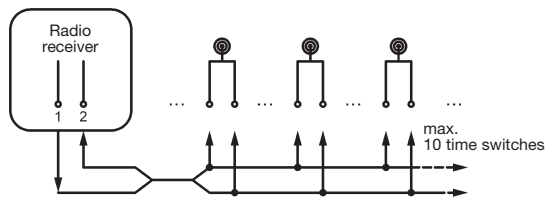
DCF 77 Radio Receiver FU 20.00 pro for wall mounting

Technical data	
Power Supply	Via time switch or master clock (without battery)
Output	DCF-protocol
Receiver	narrowband-heterodyne receiver
Operation indicator	flashing LED on receiving
Consequence of an interference with reception	time switches use their quartz as time base
Antenna	built-in ferrite rod
Permitted ambient temperature	-10°...+50°C
Housing	self-extinguishing thermoplastic
Mounting	Fastening angle for wall mounting (receiver is rotatable)
Type of protection	IP 54 (DIN EN 60529)

Rights to technical amendments reserved.



FU 20.00 pro



Type/Order No.	Version
FU 20.00 pro	for wall mounting (receiver is rotatable)